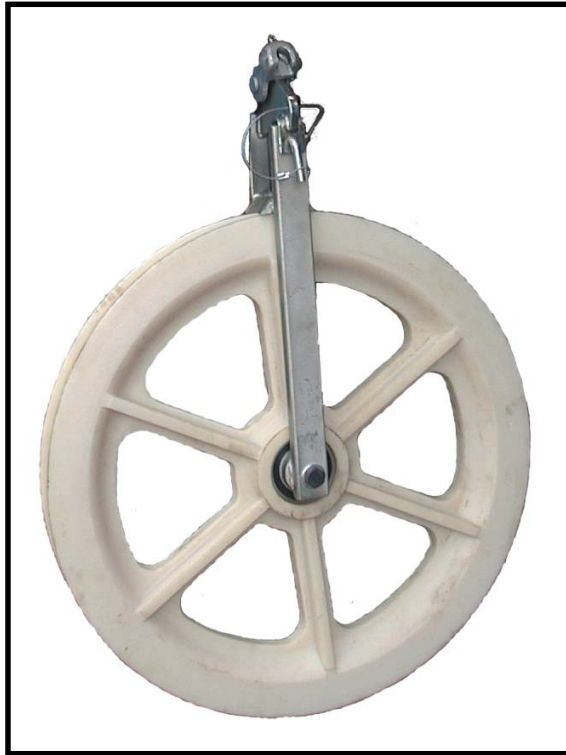


CONDUCTOR STRINGING EQUIPMENT

Single Conductor Stringing Blocks

4700 Series Nylon for Transmission Lines



Nylon Stringing Blocks

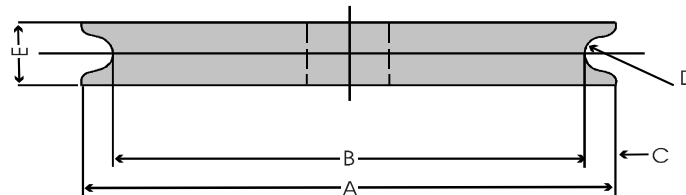
STANDARD FEATURES

Nylon sheave with ball bearings.
 Compact steel frame.
 Crosshead and type 'B' socket for suspension.
 Lightweight construction.

Dimensions

Diameter 30.69 in.
 Weight 54 lbs.
 Working Load 8,000 lbs.

NYLON CONDUCTOR SHEAVES										
	4716-1NY		4720-1Ny		4726-1Ny		4730-1Ny		4736-1Ny	
	inches	mm	inches	mm	inches	mm	inches	mm	inches	mm
A	16.54	420	20.38	518	25.63	650	30.69	780	36.06	916
B	13.62	346	16.00	407	21.56	548	23.63	600	31.50	800
C	1.46	37	2.19	55.5	2.01	51	3.54	90.00	2.13	58.70
D	.71	18	2.00	51	2.62	67	2.62	67	1.58	40
E	2.21	56	3.25	82.55	3.13	79.50	3.88	98.55	4.33	110



At TSE, engineering is a process of continuous product improvement; therefore, specifications are subject to change without notice.

09-22-2011

TSE International, Inc.
 5301 Shreveport-Blanchard Highway
 Shreveport, Louisiana 71107

Toll Free: 800-825-2402
Telephone: 318-929-2368
FAX: 318-929-4853

www.tse-international.com